



## Product Data SE06



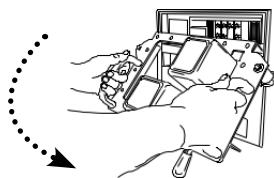
Our SE06 model actuator is designed specifically for Square D type SEF breakers. The SEF breaker is a fix mounted breaker.

The SE06 actuator is temporarily placed over the breaker by aligning it on the recessed area at the top of the breaker. Strong neodymium magnets hold it firmly in place (no modification to the breaker is necessary). Once in place the SE06 aligns with the trip and close buttons on the breaker. A hand-held controller, connected by a control cable to the actuator, allows the operator to be positioned outside the Arc Flash Hazard Boundary. Two motors and gearboxes on the SE06 operate to press the close or trip button as commanded from the hand held controller. A microcontroller monitors controller inputs and drives the motor through and intelligent H-bridge which allows precise and smooth control of the breaker trip and close buttons. The entire unit is battery powered (24VDC) which eliminates the need for external power.

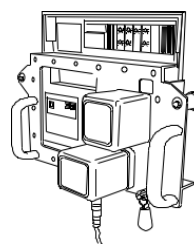
### Three Easy Steps Installs in Seconds

No external power is needed and there are no modifications to your switchgear required.

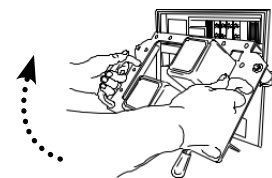
#### Step 1 Install



#### Step 2 Operate



#### Step 3 Remove



### What do you get?

The SE06 includes the actuator, hand-held controller, cable, batteries, instruction manual, and heavy duty Pelican carrying case.

### SE06 Option Control Cable

Available in 30-feet or 50-feet (It is the customer's responsibility to assure that an accurate arc-flash study of the customer's electrical system has been performed and the customer must determine the length of cable necessary to protect personnel)

#### MarTek Ltd.

4806 Chimney Drive  
Charleston, WV 25302

p (304) 965-9220  
f (304) 965-9221

www.chickenswitch.com (800) 248-4958

## Technical Specifications for SE06

### Power Supply

16-AA alkaline disposable batteries (24VDC total).  
Good for approximately 700 operations.

### Fuse

5 amp, quick-blow, AGC-5

### Control Cable

5-conductor, extra-flexible, PUR insulation, 30-feet (standard), 50-feet (optional)

### Typical Operating Time

0.3 seconds per operation.

### Gearmotors

All metal gears in a formed metallic housing.  
DC brushed permanent magnet motor.

### Construction

All metal (typically aluminum) components are manufactured on CNC equipment for precision and quality.

### Dimensions and Weight

Actuator is approximately 10"H x 17"W x 6"D. Total weight of complete kit including actuator, cable, hand-held controller, batteries, and case is 22lbs.

### Magnets

Three total, neodymium (12600 gauss each)

### Microcontroller

A programmable microcontroller manages control inputs, motor functions, monitors and limits mechanical travel and performs timing functions to protect the motor in a stalled condition.

### H-bridge

An intelligent 'H-bridge' motor driver provides start/stop/braking motor functions. The H-bridge has integral thermal shutdown protection.

### Projected Life

10,000 operations



### Magnetically Held

No modifications to your breaker or switchgear are required.

### Smooth and Precise Operation

Motor driven. No solenoid that "slam" the breaker buttons.

### Quality Construction

Made in the USA. Parts are CNC-made for quality and accuracy.

### SE06 Will Operate These Square D Breakers:

SEF36250	SEF362000
SEF36800	SEF362500
SEF361200	SEF363000
SEF361600	SEF364000